

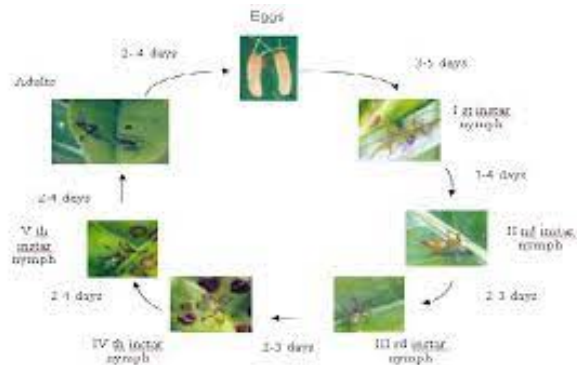
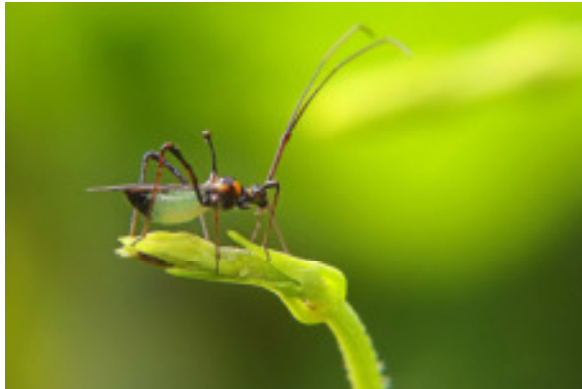


# Phormone Chemicals

The name you can always trust

Mfrs: Phormone Traps, Lures, Yellow sticky traps

**PRAYS CITRI** – Citrus blossom moth or citrus young fruit borer, is a moth of the family Plutellidae. It is an important pest found on citrus in the Mediterranean region. Citrus is the main host plant of the caterpillar.



## Biology :

In the Mediterranean region, all stages of the insect may be found throughout the year. The number of generations varies from 3-16, depending on climatic conditions. For example in Sicily, Italy there are 11 generations, and in Israel between 8 and 10 generations.

Population levels are low in winter and spring and high in summer and autumn. The threshold for development is approximately 10°C, and the first attacks occur in the spring when the temperatures exceed 10°C. Attacks are significant when the trees are in bloom.

Generally, the eggs are laid individually on the flowers, and sometimes on young fruit. On hatching the larvae bore flowers and small fruits. Cocoons may be found on fruits, flowers and leaves.

At 25°C the complete life cycle takes place in 20 days (egg = 4 days for development, larvae = 12 days, and pupa = 6 days). Temperature also influences the lifespan duration of the moth. Experiments show that the female lifespan is over 37.2 days at 10°C, while at 26°C it is less than 5 days. Adults have twilight and nocturnal habits. Females begin to oviposit 2-5 hours after mating. Each female can lay from 60-156 eggs (at 26°C the average is 110.7 eggs)

Plot No.23, TSIIC Techpark, Road No.15, IDA Nacharam, Hyderabad – 500076, Telangana, India

Tel: +91-40-27177918, Cell: +91-94408 97918

E-mail: [info@pheromonechemicals.in](mailto:info@pheromonechemicals.in), Web: [www.pheromonechemicals.in](http://www.pheromonechemicals.in)

e-shop: [www.pheromonechemicals.in](http://www.pheromonechemicals.in)



# Pheromone Chemicals

The name you can always trust

Mfrs: Pheromone Traps, Lures, Yellow sticky traps

Pheromone Traps providing information of ETL's plays important role in any IPM programme.

Trap canopy should be placed one feet above crop canopy to achieve optimum catch.

ETL for Prays citri is 6-8 No's of moths per trap per day.

LURE FOR : Prays citri

MATERIAL OF PHEROMONE LURE : Virgin Silicone

Dosage of each Lure : 3mg

Duration of Lure working in field : 30-45 Days after installation

Packing of Lures : Trilaminated Aluminum Foil

Shelf Life : 18 months from packing

**Recommended for:** Citrus, Lemon, Orange.

Use 10-15 No's of traps per acre.

**Always use Phero – Sensor™ – Delta for best results.**

Plot No.23, TSIIC Techpark, Road No.15, IDA Nacharam, Hyderabad – 500076, Telangana, India

Tel: +91-40-27177918, Cell: +91-94408 97918

E-mail: [info@pheromonechemicals.in](mailto:info@pheromonechemicals.in), Web: [www.pheromonechemicals.in](http://www.pheromonechemicals.in)

e-shop: [www.pheromonechemicals.in](http://www.pheromonechemicals.in)